



FOLD-A-WAY BUMPER CRANES

MATERIAL HANDLING SOLUTIONS SINCE 1982



- Much More
Than Just
A Crane!**
- ▶ CRANE
 - ▶ HITCH
 - ▶ WINCH
 - ▶ BUMPER
 - ▶ MAN-LIFT

WESTERN MULE CRANES

HELPING YOU GET THE JOB DONE



SINCE 1982 Western Mule Cranes, founded in 1982 to manufacture a complete line of versatile Fold-A-Way Bumper Cranes. The original design has evolved over the years into a popular material handling solution for many fleets and individual customers throughout the U.S. and beyond. The addition of our Telescoping Boom Crane line further enhanced our ability to offer additional products that satisfy our users' unique and demanding job-specific needs. **Cranes are all we do!**



Offering Convenience...

The Western Mule Fold-A-Way Bumper Crane line is designed to offer a means of lifting a load safely and quickly into your vehicle while reducing your man-power requirements. Replacing the vehicle's existing bumper, the Fold-A-Way Bumper Crane remains out of your way when not in use. The crane folds away into the bumper for convenient storage and easily folds out in seconds, ready for work whenever you need it.

Bumper Crane Benefits

- It's a heavy duty Crane
- It's a heavy duty 2" Receiver Hitch
- It's a rear vehicle Winch *
- It's a heavy duty rear Step Bumper
- It can be used as a man lift for Confined Space Rescue *
- It requires no bed space
- Crane is hidden when not in use
- Sets up in seconds
- Enables you to work faster, safer and reduces man-power requirements
- Can be transferred to your next vehicle

* Options required. See attached Option Sheet.

Key Features ♦ For All 11 Models

- ✓ **HOIST:** 12V-DC powered from vehicle battery
- ✓ **CONTROL:** 10' handheld Pendant Control
- ✓ **ROTATION:** 360° continuous manual rotation
- ✓ **OUTRIGGER:** Built in, fold-down and adjustable
- ✓ **MOUNTING:** All brackets, hardware & wiring included
- ✓ **HITCH:** 2" Receiver Hitch
- ✓ **FINISH COAT:** Durable powder coating; semi-gloss black
- ✓ **WARRANTY:** One year limited warranty (excludes cable)

For Detailed Specifications >>> WESTERNMULE.com

Note: Photos may display applications with options/accessories installed

A-Series

Model
Capacity

A-1350	A-2000
1350 lbs.	2000 lbs.

FOR MID & FULL SIZE PICKUPS

With the addition of an A-Series Bumper Crane, your pickup is transformed into a real work truck without losing any valuable bed space or existing function of your vehicle. When the crane is in the stored position everyone will be amazed that you have anything more than a great looking heavy duty rear bumper. Within seconds your Bumper Crane is ready to swing into action to lift those cumbersome loads.



- » Bumper is built to the vehicle width
- » Two lifting heights 77" & 85" from top of bumper *
- » 45" fixed boom length *
- » Class III, 2" Receiver Hitch

* Model A-750 has lifting height of 73" from top of bumper & fixed boom length of 42"

S-Series

Model
Capacity

S-1350	S-2000	S-2500
1350 lbs.	2000 lbs.	2500 lbs.

FOR SERVICE BODIES, FLATBEDS, CUBE & SPRINTER VANS

The S-Series Bumper Crane is the answer to your handling, loading and unloading chores without sacrificing valuable bed space. Your Service Body, Flatbed, Cube or Sprinter Van will have the tool you need for your demanding work load. From the S-1350 all the way up to the 2500 lb. capacity S-2500, you can turn your vehicle into a real work truck!

- » Bumper custom built to body width
- » Lifting Height 77" & 85" from top of bumper
- » 45" fixed boom length
- » Class IV, 2" Receiver Hitch



Note: Photos may display applications

V-Series

Model
Capacity

V-1000

V-1350

1000 lbs.

1350 lbs.

FOR GM SAVANNA, EXPRESS & FORD ECONOLINE CARGO VANS



Need a way to load heavy, bulky loads into the rear cargo area of your van? The Western Mule V-Series Bumper Crane is your answer. You will have a quick and convenient means to move loads into and out of your van without the loss of any cargo space or rear door access.

- » Bumper custom built to the width of van
- » Boom height maximized to door height
- » 42" fixed boom length
- » Class III, 2" Receiver Hitch



U-Series

Model
Capacity

U-1350

U-2000

U-2500

1350 lbs.

2000 lbs.

2500 lbs.

FOR SERVICE BODIES, FLATBEDS & CUBE VANS



The U-Series Cranes have been designed in conjunction with utility companies, specifically for their demanding job-specific needs. The U-Series features standard items that are optional in other series. Unique to the U-Series models are the two Grip Strut Steps that provide for safe, secure footing when accessing the rear bed area of the vehicle.

- » Bumper custom built to body width
- » Boom Height of 77" & 85" from top of bumper
- » 45" fixed boom length
- » Class IV, 2" Receiver Hitch
- » Two heavy duty Rear Grip Strut Steps
- » Aluminum Diamond Plate Cover
- » Rear LED Identification Lights



with options/accessories installed

WESTERN MULE CRANES • Toll Free: 800-288-6853 • WWW.WESTERNMULE.COM

OPTIONS & ACCESSORIES

Note: This is a partial list. Contact or visit us online for a complete list of options and accessories at WESTERNMULE.com

WO-14 Rotation Lock

A positive boom rotation locking device for securing the boom at 12-fixed points of rotation. The Rotation Lock is made entirely of corrosion resistant stainless steel. Simple push and turn - detent operated.



WO-16 Aluminum Cover

A two-piece Aluminum Diamond Plate Top Cover, with a continuous stainless steel hinge and equipped with a magnetic latch to secure the cover when closed.



WO-17 Lower Bumper Enclosure

A three-piece Aluminum Protective Enclosure for the bottom side of the bumper. This cover is beneficial in adverse climatic conditions, keeping the unit clean and free of mud, dirt, snow, etc.



WO-18, WO-19 LED Tail and Backup Lights

Sealed beam LED Tail & Backup Lights are flush mounted in a rubber shock mount. Pre-wired to a single pigtail for easy hookup.



WA-30 Winching Block

This accessory is necessary if you desire to use your crane for winching the vehicle or to winch loads to the vehicle.



WA-15 Removable Crank Down Outrigger

The Removable Crank Down Outrigger will provide added stability and leveling of the crane, especially when used on uneven terrain.



WA-44 Barrel Sling

Convenient to use. Fits all types of 55 gal or smaller barrels with a top lip. Maximum capacity of 850 lbs. Galvanized construction.



WO-CSR Confined Space Rescue/Recovery System

Required when using the crane as a man-lift for confined space activities. This option includes WO-14 Rotation Lock, WO-41 Fall Arrestor Boom Attachment Anchor Pin, WO-23 65' x 3/16" Galvanized Lifting Cable (1350 lb. cap. models only), R50G quick attached hand crank operated Recovery Winch/ Fall Arrestor with 50' lifeline.



WO-60 Vice Mount

A 360° Swivel Vise Mount, integrated into the rear corner of the bumper. Can be installed on either right or left hand side of the bumper (vice not included).



WO-91 Fold-Down Rear Step

A heavy duty, fold-down, galvanized rear grip strut step. Available on most models. The step provides safe and secure footing for rear vehicle access.



WO-32 Left Side Swing Down Outrigger

Optional Left Side Swing Down Outrigger to add additional stability to vehicle while lifting loads. (All models are equipped with a right side fold down outrigger as a standard feature)



WO-02 Left Side Mast Position

The crane's mast can be factory placed on the left (street) side rather than the standard right (curb side) end of the bumper.



WO-39 Wireless Remote Control

Compact, water resistant & equipped with a belt clip. Fifty foot range and a long battery life provide you with the freedom to move about while not being tethered to the crane.





FOLD-A-WAY
CRANE

www.westernmule.com

U-SERIES

U-1350: 1,350 Lbs Capacity

U-2000: 2,000 Lbs Capacity

U-2500: 2,500 Lbs Capacity

The Western Mule U-Series Fold-A-Way Cranes are becoming standard equipment in fleets where larger heavy-duty trucks are utilized in demanding operations.

A truck equipped with the Western Mule U-Series Crane, provides safe, easy handling of loads up to 2500 lbs (*depending upon the model*) without the need of additional support personnel or equipment.

The Western Mule is **Five Tools in One.**

It is a **Crane** that neatly folds-a-way and stores into one of the strongest built **Rear Bumper** on the market today, factory equipped with a **Class 4 Receiver Hitch**. Up to 8000 lbs of **Rear Winching Capacity**. And the crane is also OSHA & ANSI compliant as a Man-Lift when equipped with the optional Confined Space Rescue & Recover System.

The top of the line U-Series, includes features as standard equipment that have been found over the past 25 years to be essential for our hard working users.



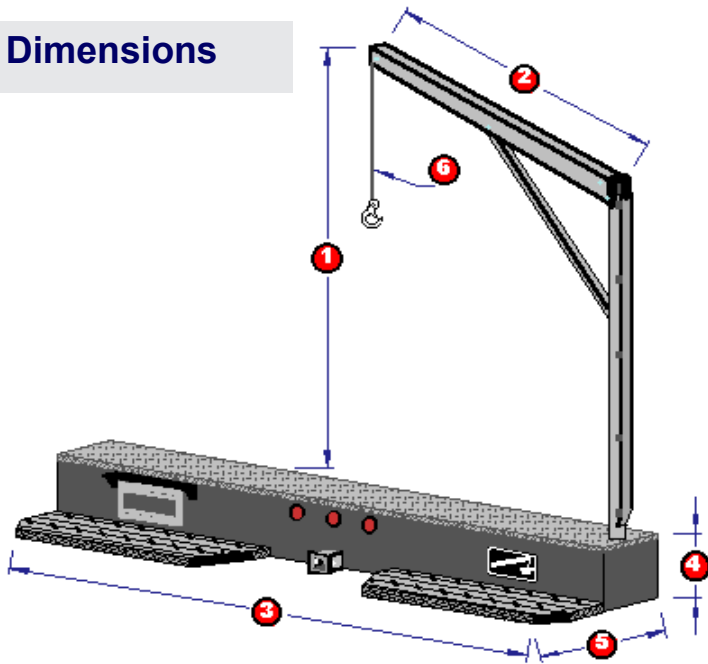
Two Grip Strut Steps are incorporated to provide safe and secure entry or egress from the rear of the vehicle. The open grip strut design eliminates the accumulation of snow and mud allowing for secure footing. The **Aluminum Diamond Plate Cover** provides a secondary step, as well as a weather cover for the crane.

The integration of a **Swivel Vice Mount** (optional) at the corner of the bumper offers a solid attachment point for a vice or other mounting needs. The mount swivels and locks at 90° increments. A second vice mount can also be included at the opposite end of the bumper.

COMPLETE LINE OF CRANES

With over 18 models of cranes in our ever growing product line, we have a crane to fit your application! Bumper type cranes for pickups, vans both standard & cube type, service bodies, flatbeds, etc. Our M-Series & P-Series Telescoping Boom Cranes for bed and platform mounting are also available.

Dimensions



Western Mule Cranes

Fresno, CA 93706 USA
 (800)288-6853 (559)266-6977
 Fax (559)266-7437
cranes@westernmule.com
www.westernmule.com

Model	Lifting Capacity	Boom Height	Boom Length	Bumper Width	Face Height	Bumper Depth	Cable Size	Shipping Wt. Lbs.
		1	2	3	4	5	6	
U-1350	1350#	77" & 85"	45"	80" - 102"	11"	18"	25'x3/16"	410-440
U-2000	2000#	77" & 85"	45"	80" - 102"	11"	18"	50'x7/32"	410-440
U-2500	2500#	77" & 85"	45"	80" - 102"	11"	18"	50'x7/32"	435-465

Dimensions are for reference only and subject to change without notice.

Standard Features

Grip Strut Steps to provide a safe/secure access to the rear of the vehicle.

Aluminum Diamond Plate Cover provides secondary step, as well as a weather cover for the crane.

Class 4 Receiver Hitch to match your heavy-duty trailering needs, with integral safety chain D-Ring.

Two Boom Heights provide 77" and 85" boom height.

Built in LED Identification Lamps flush mounted into the bumper.

Custom Built to the vehicles width. Ideally suited for service bodies, cube vans, and flatbeds, with bumper widths from 80" to 102".

Powder Coat semi-gloss black finish. Steps powder

Options (partial list)

Vice Mount (as shown in photos)
 Lower Bumper Enclosure
 Rotation Lock
 LED Tail Lights (as shown)
 LED Backup Lights (as shown)
 Class 5 Hitch Upgrade
 Free-Wheeling
 Backup Alarm
 Rotation Stops
 Confined Space Rescue/Recovery System

Accessories (partial list)

Removable Crank Down Outrigger
 Winching Block
 Pintel Hitch Insert (as shown in photos)
 Pintel or Multi Hitch

For more information or specifications for this model or the complete line of Western Mule Cranes, please contact the nearest Western Mule Crane Distributor or call (800)288-6853

You own the most versatile van on the market. Now add a Western Mule Fold-A-Way Crane to make it a total work package.

With our S-1350 Crane, you will have the muscle to lift those cumbersome loads easily, safely with less manpower.

The easy to install, direct bolt-up mounting kit, and simple single power wire installation, will have you ready to handle loads up to 1350 lbs at the push of a button.

If your job requires work below ground in Confined Spaces. The Western Mule Crane can be configured to meet OSHA requirements for Confined Space Activates.



Shown with optional WO-16 Aluminum Diamond Plate Cover and WO-2 Left Side Mast Location (right side std.)



For detailed specification please see Specification Sheet for the Model S-1350 Crane.

- ▶ 1350 lb. maximum lifting capacity.
- ▶ 77" & 85" lifting height. 45" reach.
- ▶ 360° continuous manual rotation on sealed bearings.
- ▶ 12V-DC powered with 10' Pendant Control.
- ▶ Easy setup. The crane stores in the bumper when not in use (setup in 20 sec.).
- ▶ Built in Class III Receiver Hitch Standard.
- ▶ Built to ANSI Standards for mobile cranes.
- ▶ Circuit breaker protected.
- ▶ Durable Powder coat finish.

Options & Accessories available. Please inquire regarding custom configurations.

M1000 SERIES

Lifting Capacity: 1,000 lbs.
Boom Length: 5 ft.

Featuring a **unique**, lightweight and low profile design, for mounting on top of utility bed boxes or for other low profile applications (custom pedestal heights also available - see "Options" list on reverse side).

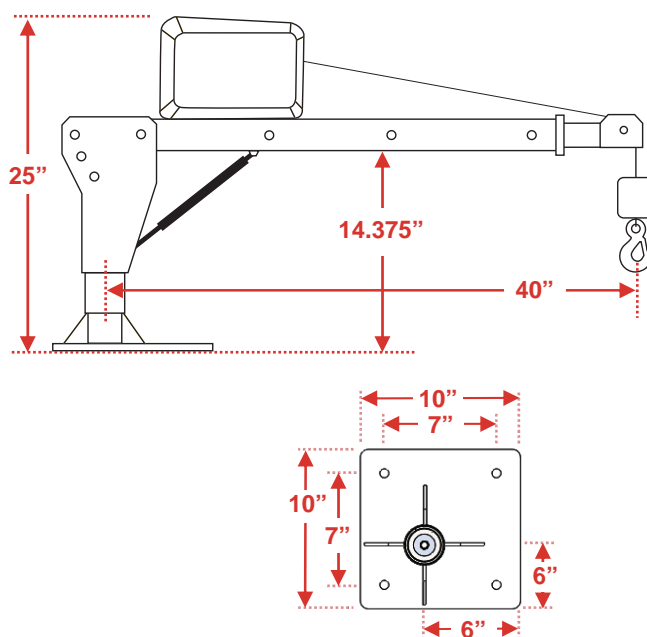
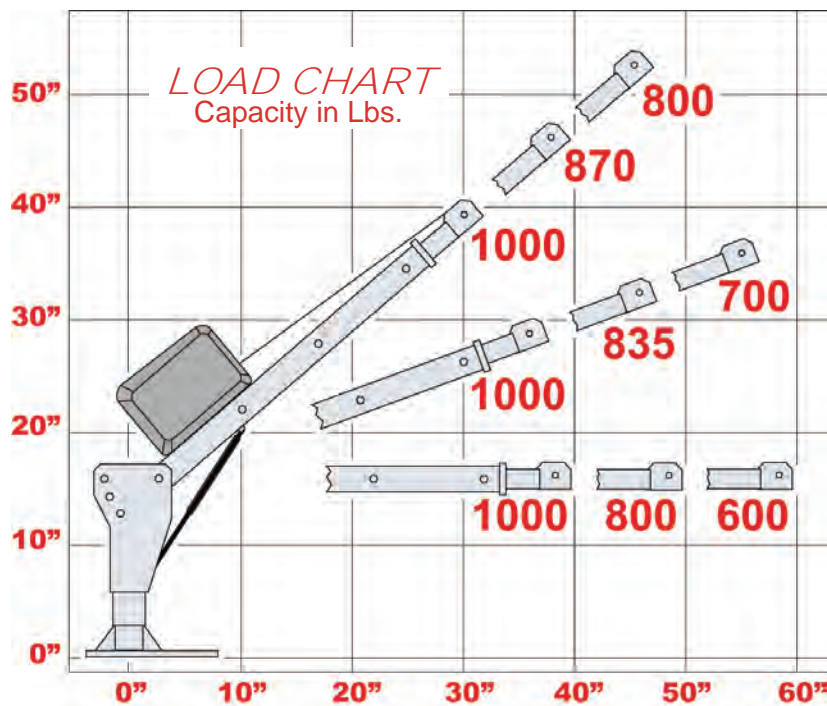
Very **compact**, weighing only 117 lbs. installed. Features a Gas Spring lift assisted boom.

A **versatile** design with 12V-DC, 120V-AC or Manual Hand Crank operated models.



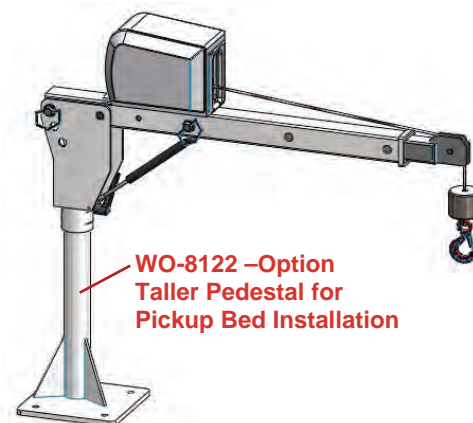
- ▶ 1000 lbs. Max. Lifting Capacity
- ▶ Gas Spring Lift Assisted Boom
- ▶ Three Boom Elevation Angles: 0°, 20°, 40° raised manually with Gas Spring Lift Assist
- ▶ Three Position Telescoping Boom: 40", 50" & 60" extended manually
- ▶ 360° Manual Rotation on a Sealed Thrust Bearing
- ▶ Rotation Hand Brake
- ▶ Three models powered by either a 12V-DC, 120V-AC or Manual Hand Crank Winch
- ▶ 10' Remote Pendant Control
- ▶ 20' x 3/16" Lifting Cable w/Hook
- ▶ Detachable Power Cable
- ▶ Durable White Powder Coat Finish
- ▶ 1-Year Warranty (excluding lifting cable)

Optional mast heights, mounting bases, and custom configurations also available.



OPTIONS

Part #	Description
WA-26	Boom Rest
WO-22	50' x 3/16" Lifting Cable (upgrade from 20')
WO-34	Fold-Down Adjustable Outrigger
WO-39	Wireless Remote Control
WO-8122	Taller Pedestal for Pickup Box Installation
WO-8126	Custom Pedestal Height, Specify Height



STANDARD FEATURES

MODEL:	M1000-DC	M1000-AC	M1000-MN
Lifting Capacity (maximum)	1000 lbs.	1000 lbs.	1000 lbs.
Lifting Height Max. Std. (base to hook)	47"	47"	47"
Storage Height Folded (from base)	25"	25"	25"
Boom Maximum Reach	60"	60"	60"
Boom Angles	0°, 20°, 40°	0°, 20°, 40°	0°, 20°, 40°
Rotation (continuous) with Brake	360° Manual	360° Manual	360° Manual
Lifting Cable	20' x 3/16"	20' x 3/16"	20' x 3/16"
Line Speed (feet/min) No Load / Load	16 / 6	17 / 8	Manual Crank
Power Requirements	12 VDC 70 amps	120 VAC 6 amps	Manual
Controls	10' Remote (Detachable)	10' Remote	N/A
Mounting Base	10" x 10"	10" x 10"	10" x 10"
Mounting Bolt Hole Pattern	7" x 7"	7" x 7"	7" x 7"
Finish	White Powder-Coat	White Powder-Coat	White Powder-Coat
Weight of Crane / Shipping Weight (Lbs)	117 / 155	117 / 155	106 / 139
Warranty (excluding lifting cable)	1-Year	1-Year	1-Year

We reserve the right under the Product Improvement Policy to change specifications without notice or reference to specification used herein.

R217





MODEL: M2000

Lifting Capacity: 2,000 lbs.

www.westernmule.com

FEATURES

- ▶ Gas Spring Lift-Assisted Boom
- ▶ 2,000 lbs. Maximum Lifting Capacity
- ▶ Low Profile Design
- ▶ 12 Position Manually Adjustable Boom
- ▶ 6' Horizontal Boom Reach
- ▶ 360° Manual Rotation
- ▶ Positive Rotation Lock - 12 Fixed Points



- ▶ 12V-DC Powered, Up/Down, with Dual Internal Braking
- ▶ Double-Line, 35' x 3/16" Galvanized Aircraft Cable and Safety Hook
- ▶ 10' Detachable Remote Pendant Control
- ▶ Light-Gray Powder Coat Finish
- ▶ 1-Year Warranty

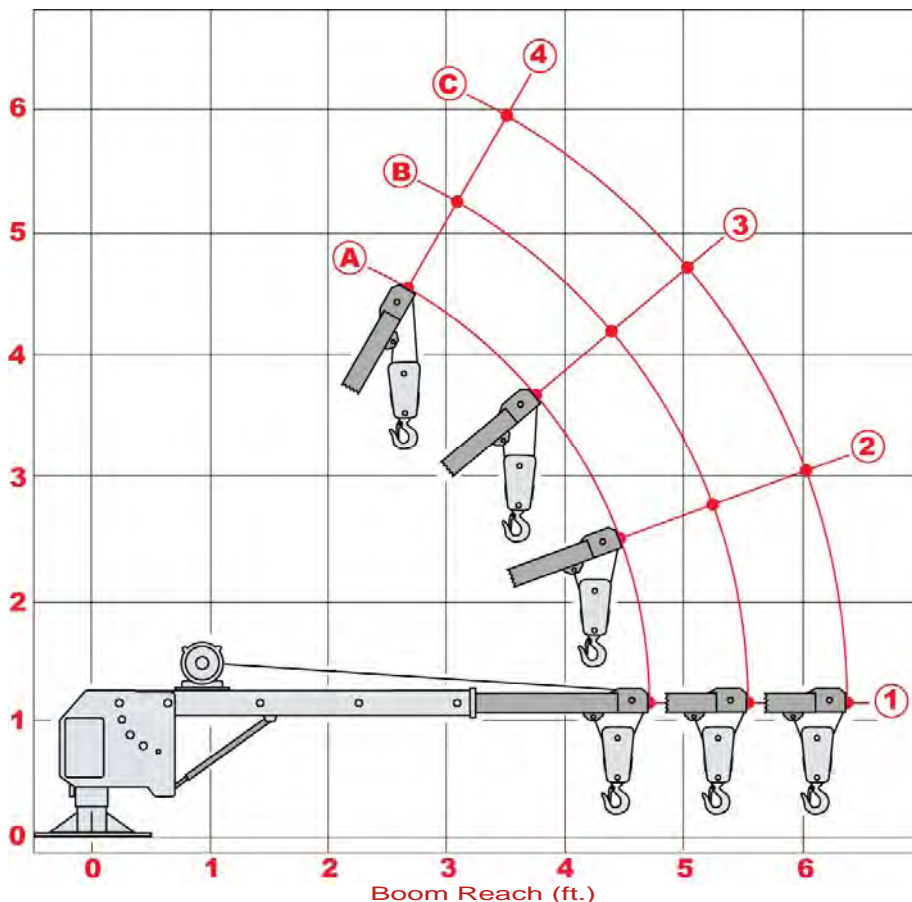
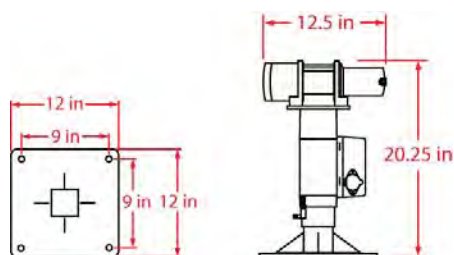


*Shown above with Tall Pedestal for Pickup Bed Mounting (WO-8022).
Custom Pedestal Heights (WO-8026) and custom configurations available.*

Load Chart

Boom Position	A	B	C
4	2000	1900	1750
3	1775	1625	1450
2	1500	1375	1175
1	1350	1125	900

Capacity in Lbs.

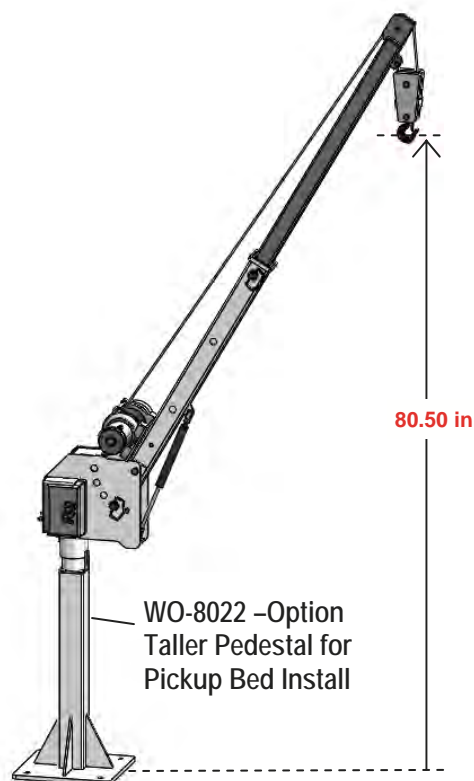


SPECIFICATIONS

Lifting Capacity (maximum)	2,000 lbs.
Power Requirements	12V-DC, 80 Amp Max.
Circuit Breaker	Included
Boom Maximum Reach	72"
Boom Extension	3-Positions
Boom Angles	0°, 20°, 40°, 60°
Rotation	360° Manual
Rotation Lock	12-Position
Bearings	3 Bearings
Lifting Cable	35' x 3/16" (Double-line)
Control	10' Remote (Detachable)
Mounting Base	12" x 12" (9" x 9" bolt space)
Finish	Lt. Gray Powder-Coat
Weight of Crane / Ship Weight	205 / 245 lbs.
Warranty (excludes lifting cable)	1-Year

OPTIONS

Part #	Description
WA-26	Boom Rest
WO-34	Fold-Down Adjustable Outrigger
WO-39	Wireless Remote Control
WO-8022	Taller Pedestal for Pickup Bed Install
WO-8026	Custom Pedestal Height



We reserve the right under the Product Improvement Policy to change specifications without notice or reference to specification used herein.

R217

WESTERN MULE CRANES 1510 Merced St. Fresno, CA USA

Ph: (800)288-6853, (559)266-6977 ♦ Fax: (559)266-7437 ♦ www.westernmule.com



M-15R: 1,500 Lbs. Maximum
M-20R: 2,000 Lbs. Maximum

The Western Mule M-15R & M-20R Telescoping Boom Cranes are designed and engineered for safety, ease of operation and low maintenance. Enabling you to do your work **faster and safer** while reducing the risk of injury.

STANDARD FEATURES- include a 12V-DC winch powered by the vehicles electric system, and is circuit breaker protected. Controlled by a weatherproof, 10-foot detachable control pendant, powered up and down.



COMPACT- folds and stores below cab height when mounted on a pickup.

LOW MAINTENANCE- environmentally sealed bearings and winch reduces maintenance.

ECONOMICAL- a small equipment investment will increase your efficiency and add value to the vehicle.

VERSATILE- the crane is ideally suited for mounting on pickups, service bodies, flat beds and loading docks. Custom pedestal heights available.

LIGHTWEIGHT- strong, lightweight, and yet requires only a minimum amount of bed space for mounting.



- ▶ 12V-DC Powered
- ▶ 10' Remote Pendant
- ▶ 360° manual rotation
- ▶ Boom Length 52"-72"
- ▶ 15 Position Adjustable Boom
 - 3 Boom Extensions
 - 5 Elevations
- ▶ Powder Coat Finish –Lt Gray
- ▶ 1-Year Warranty

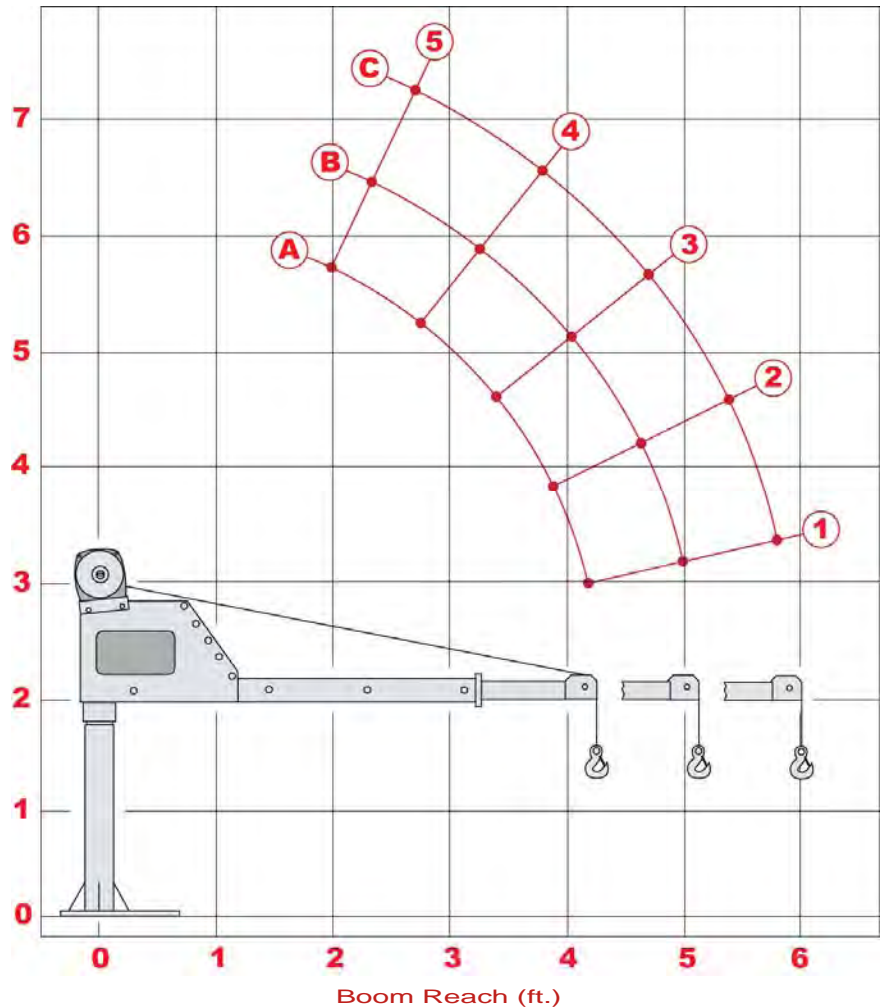
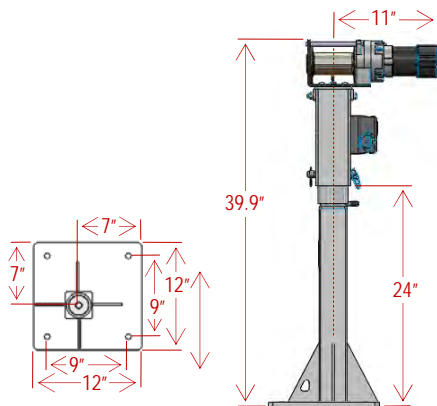


Optional mast heights and custom configurations also available.

OPTIONS

Part #	Description
WO-14	Rotation Lock
WA-26	Boom Rest
WO-34	Fold-Down Adjustable Outrigger
WO-39	Wireless Remote Control
	Optional Stainless Steel Cable
	Optional Cable Length
	Optional Pedestal Height

(Specify when ordering)



Optional pedestal heights, mounting bases, and custom configurations available.

STANDARD FEATURES

MODEL:	M-15R	M-20R
Max. Lifting Capacity	1500 lbs.	2000 lbs.
Winch Power	12V-DC, 80 Amp Max.	12V-DC, 80 Amp Max.
Circuit Breaker	Included	Included
Boom Maximum Reach	72"	72"
Boom Extension	3-Positions	3-Positions
Boom Angles	0°, 20°, 40°, 60°	0°, 20°, 40°, 60°
Rotation	360° Manual	360° Manual
Bearings	3 Bearings	3 Bearings
Lifting Cable	25' x 3/16"	25' x 7/32"
Control	10' Remote (Detachable)	10' Remote (Detachable)
Mounting Base	12" x 12" (9" x 9" Bolt Space)	12" x 12" (9" x 9" Bolt Space)
Finish	Lt. Gray Powder-Coat	Lt. Gray Powder-Coat
Weight of Crane/Ship Weight	190 / 225 lbs.	205 / 235 lbs.
Warranty (excluding lifting cable)	1-Year	1-Year

LOAD CHARTS

M-15R			
Boom Position	A	B	C
5	1500	1350	1065
4	1500	1215	950
3	1250	1045	805
2	1100	865	660
1	950	695	525

M-20R			
Boom Position	A	B	C
5	2000	1800	1420
4	2000	1620	1265
3	1750	1395	1075
2	1500	1155	880
1	1280	995	695

Capacity in Lbs.

We reserve the right under the Product Improvement Policy to change specifications without notice or reference to specification used herein.

R217

WESTERN MULE CRANES 1510 Merced St. Fresno, CA USA
Ph: (800)288-6853, (559)266-6977 ♦ Fax: (559)266-7437 ♦ www.westernmule.com



Lifting Capacity: 1,000 lbs.
Boom Length Extended: 5 ft.

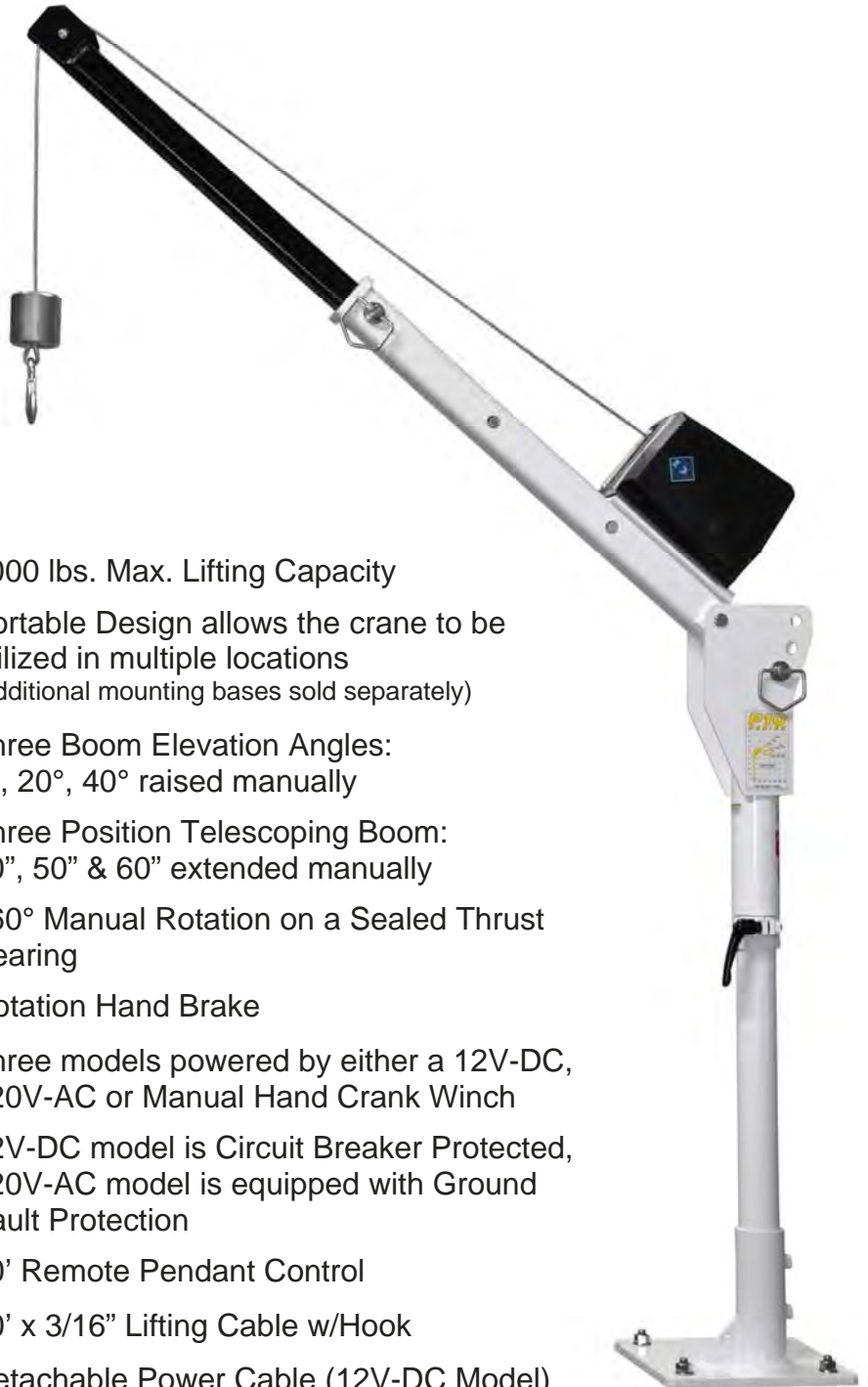
Featuring a lightweight, portable design, for mounting into pickups, service bodies, vans, loading docks, platforms, etc.

Compact, weighing only 132 lbs. installed, with a fold-down boom design for storage and requiring minimal mounting space.

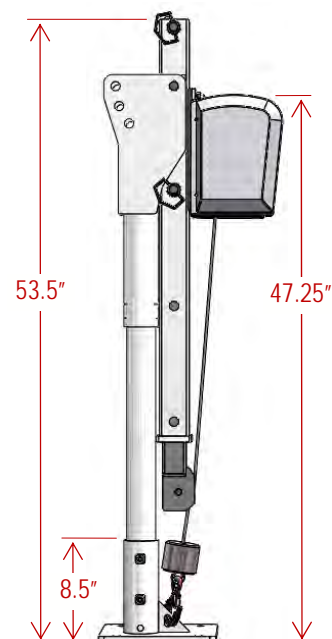
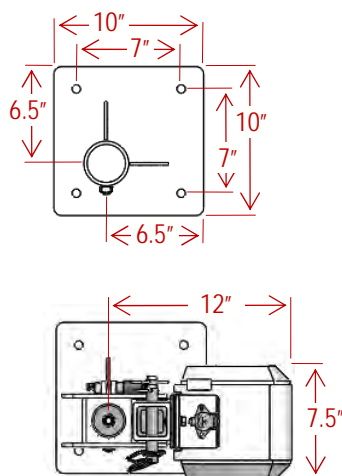
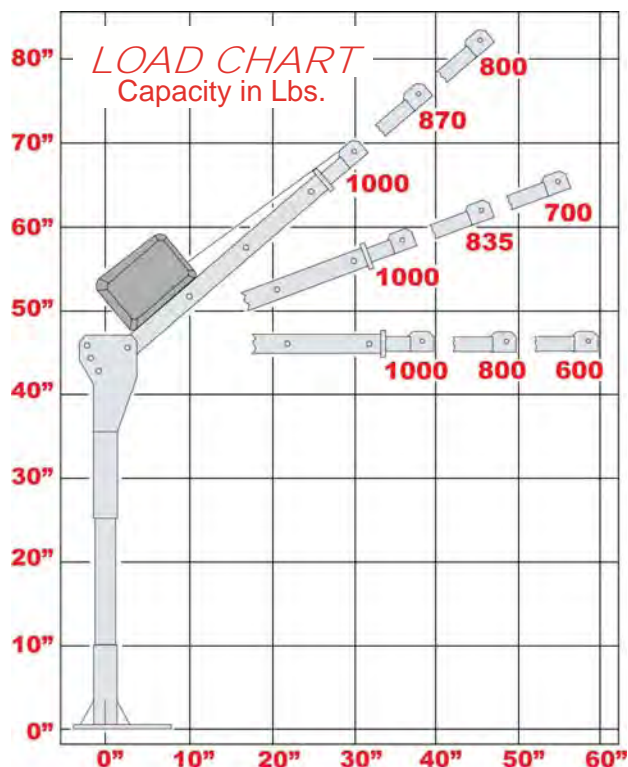
Versatile design with 12V-DC, 120V-AC or Manual Hand Crank operated models. Optional Mast Heights, Mounting Bases, and Accessories are also available.



- ▶ 1000 lbs. Max. Lifting Capacity
- ▶ Portable Design allows the crane to be utilized in multiple locations (additional mounting bases sold separately)
- ▶ Three Boom Elevation Angles: 0°, 20°, 40° raised manually
- ▶ Three Position Telescoping Boom: 40", 50" & 60" extended manually
- ▶ 360° Manual Rotation on a Sealed Thrust Bearing
- ▶ Rotation Hand Brake
- ▶ Three models powered by either a 12V-DC, 120V-AC or Manual Hand Crank Winch
- ▶ 12V-DC model is Circuit Breaker Protected, 120V-AC model is equipped with Ground Fault Protection
- ▶ 10' Remote Pendant Control
- ▶ 20' x 3/16" Lifting Cable w/Hook
- ▶ Detachable Power Cable (12V-DC Model)
- ▶ Durable White Powder Coat Finish
- ▶ 1-Year Warranty (excluding lifting cable)



Optional mast heights, mounting bases, and custom configurations also available.



Optional mast heights, mounting bases, and custom configurations available.

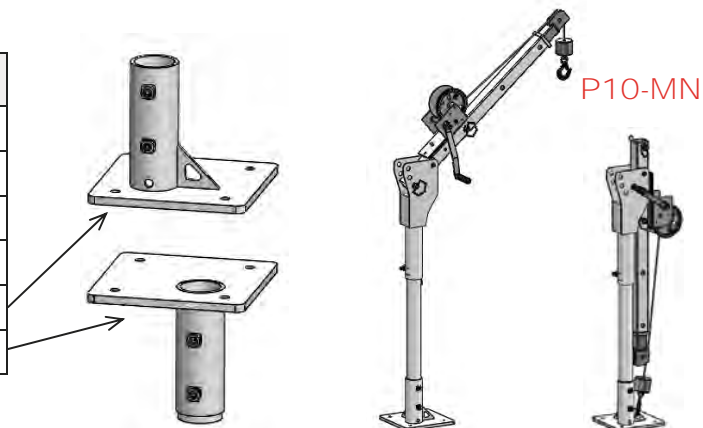
STANDARD FEATURES

MODEL:	P10-DC	P10-AC	P10-MN
Lifting Capacity (maximum)	1000 lbs.	1000 lbs.	1000 lbs.
Lifting Height Max. Std. (base to hook)	72"	72"	72"
Storage Height Folded (from base)	53.5"	53.5"	53.5"
Reach Max. (from center of rotation)	60"	60"	60"
Rotation (continuous) with Brake	360° Manual	360° Manual	360° Manual
Lifting Cable	20' x 3/16"	20' x 3/16"	20' x 3/16"
Line Speed (feet/min) No Load / Load	16 / 6	17 / 8	Manual Crank
Power Requirements	12V-DC 70 amps	120V-AC 6 amps	Manual
Controls	10' Remote (Detachable)	10' Remote	none
Mounting Base	10" x 10"	10" x 10"	10" x 10"
Mounting Bolt Hole Pattern	7" x 7"	7" x 7"	7" x 7"
Finish	White Powder-Coat	White Powder-Coat	White Powder-Coat
Weight of Crane / Shipping Weight (Lbs)	132 / 170	132 / 170	121 / 154
Warranty (excluding lifting cable)	1-Year	1-Year	1-Year

OPTIONS

Part #	Description
WP-120	12" Taller Mast (increases height 12")
WP-240	24" Taller Mast (increases height 24")
WP-22	50' x 3/16" Lifting Cable (upgrade from 20')
WA-34	Fold-Down Adjustable Outrigger
WP-110	Extra Mounting Base - (Standard)
WP-114	Extra Mounting Base - (Inverted)

Note: Standard mounting base is included with each crane.



We reserve the right under the Product Improvement Policy to change specifications without notice or reference to specification used herein.

R217

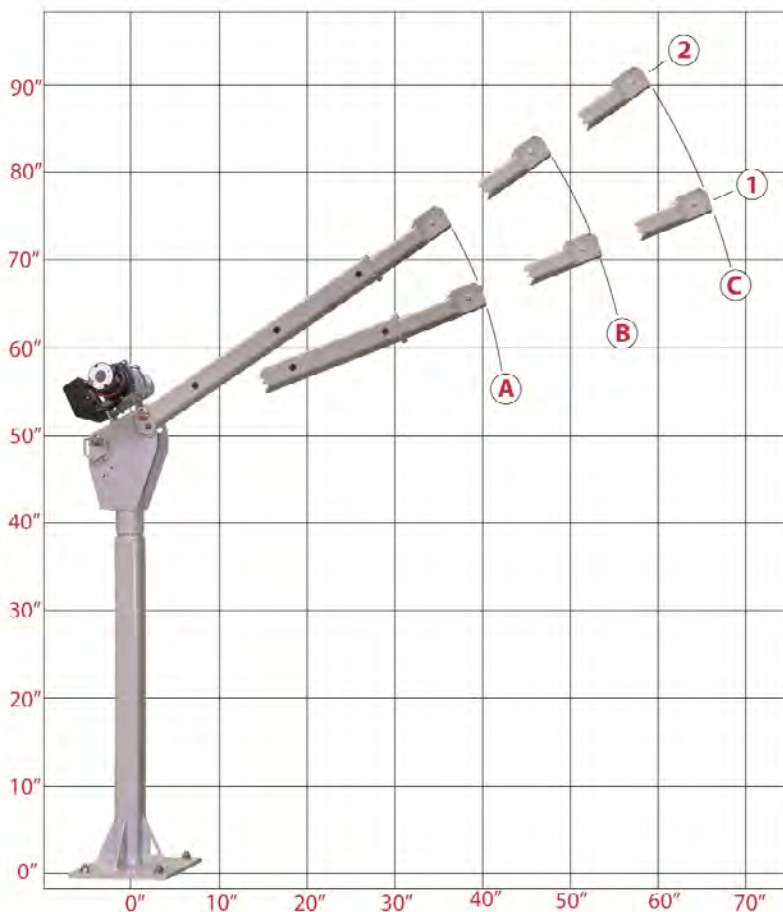
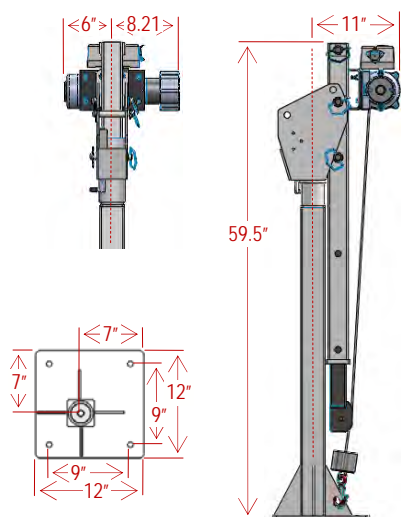


Lifting Capacity: 1,000 Lbs.
For CCTV below-grade applications

LOAD CHART

Boom Position	A	B	C
2	1000	850	700
1	950	775	625

Capacity in Lbs.



- ▶ 1,000 Lbs. Maximum Lifting Capacity
- ▶ 6 Position Manually Adjustable Boom (Up to 88" of lifting height)
- ▶ 360° Manual Rotation; rotating upon sealed bearings
- ▶ Positive Rotation Lock: secures the boom at 12 fixed points
- ▶ 12V-DC Powered, up/down, with Dual Internal Braking
- ▶ 75' x 5/32" Galvanized Aircraft Cable and Safety Hook with 2800 Lb. Break Strength
- ▶ 10' Detachable Remote Pendant Control
- ▶ Crane is pre-wired, factory tested
- ▶ Detailed installation and operating instructions provided
- ▶ Durable Powder Coat Finish (Light Grey)
- ▶ Crane weight is 200 Lbs. (Shipping wt: 235 Lbs.)
- ▶ 1-Year Limited Warranty (excluding lifting cable)

NOTE: Custom configurations of this and all models of Western Mule Cranes are available. This crane can be tailored to your specific application. Variation includes, but is not limited to specifying a maximum stored height, custom boom length, additional lifting height, or a custom mounting base. Please inquire for more details.

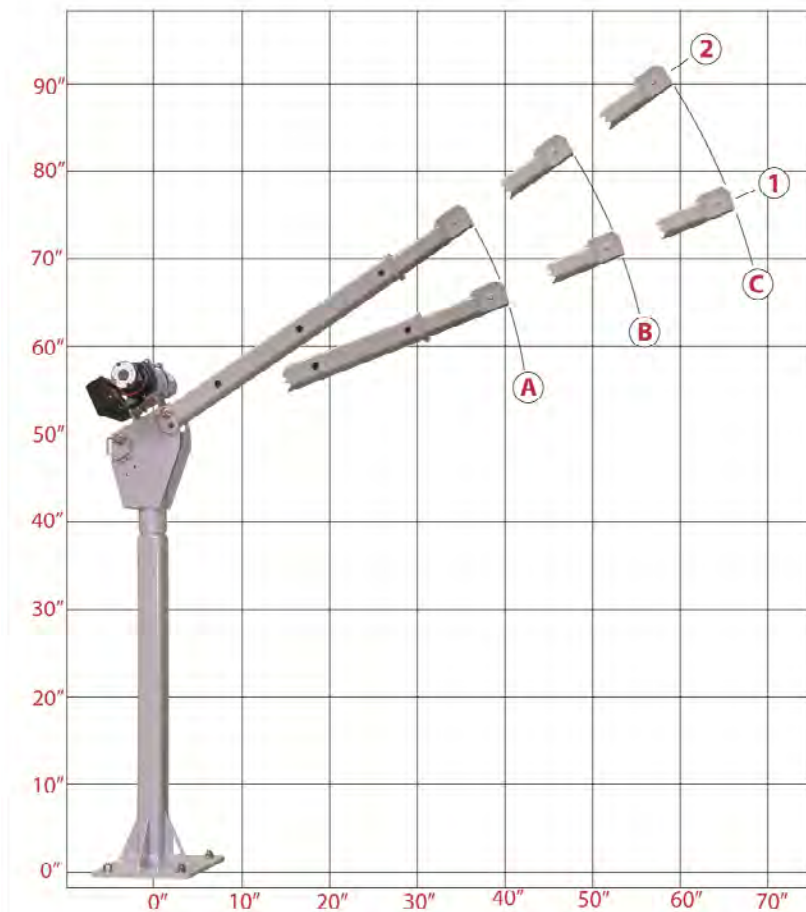
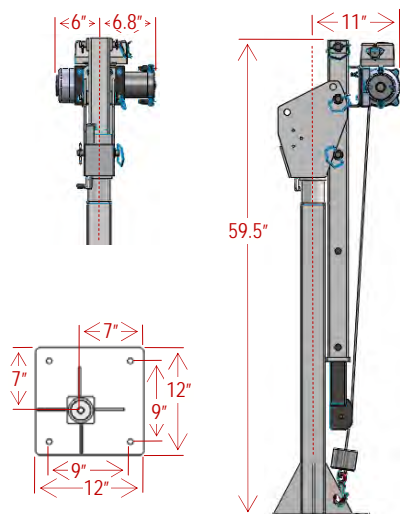
We reserve the right under the Product Improvement Policy to change specifications without notice or reference to specification used herein.

R217

LOAD CHART

Boom Position	A	B	C
2	1000	850	700
1	950	775	625

Capacity in Lbs.



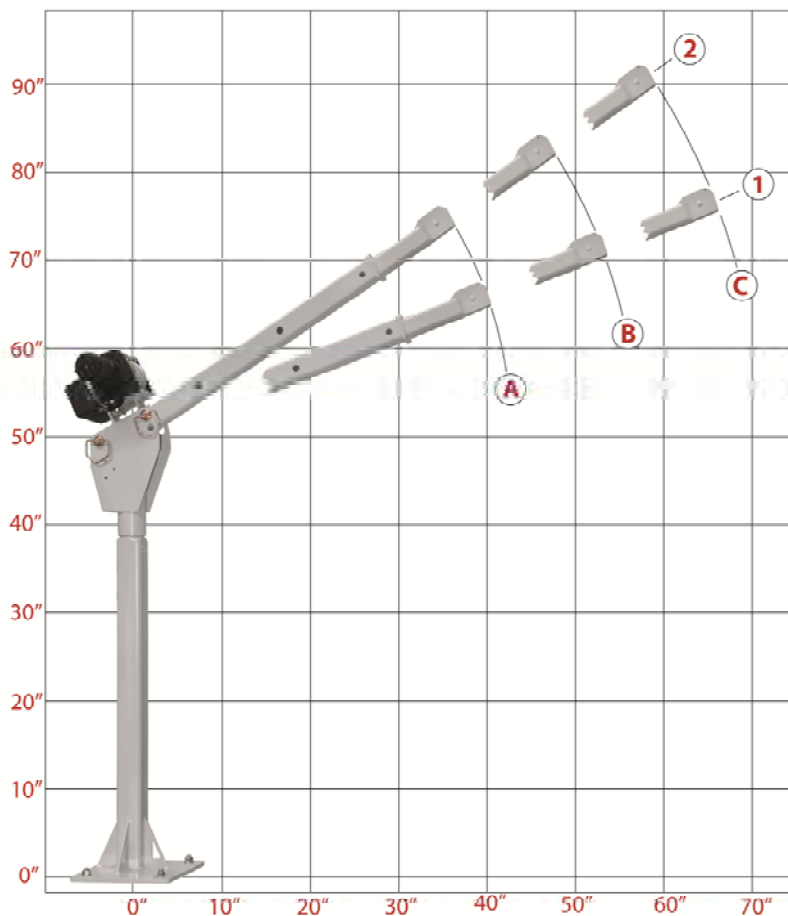
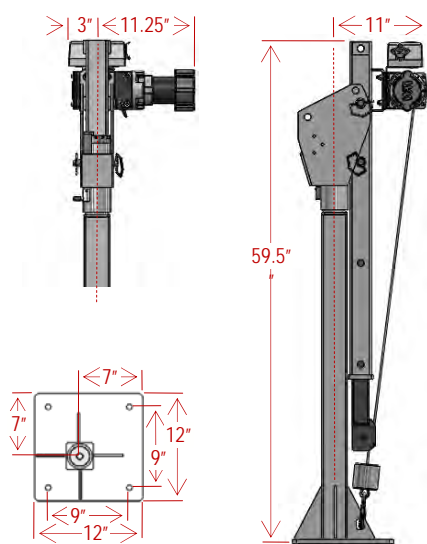
- ▶ 1,000 Lbs. Maximum Lifting Capacity
- ▶ 6 Position Manually Adjustable Boom (Up to 88" of lifting height)
- ▶ 360° Manual Rotation; rotating upon sealed bearings
- ▶ Positive Rotation Lock: secures the boom at 12 fixed points
- ▶ 12V-DC Powered, up/down, with Dual Internal Braking
- ▶ 25' x 3/16" Galvanized Aircraft Cable and Safety Hook
- ▶ 10' Detachable Remote Pendant Control
- ▶ Crane is pre-wired, factory tested
- ▶ Detailed installation and operating instructions provided
- ▶ Durable Powder Coat Finish (Light Grey)
- ▶ Crane weight is 200 Lbs. (Shipping wt: 235 Lbs)
- ▶ 1-Year Limited Warranty (excluding lifting cable)

NOTE: Custom configurations of this and all models of Western Mule Cranes are available. This crane can be tailored to your specific application. Variation includes, but is not limited to specifying a maximum stored height, custom boom length, additional lifting height, or a custom mounting base. Please inquire for more details.

LOAD CHART

Boom Position	A	B	C
2	2000	1600	1300
1	1800	1350	1000

Capacity in Lbs.



- ▶ 2,000 Lbs. Maximum Lifting Capacity
- ▶ 6 Position Manually Adjustable Boom (Up to 88" of lifting height)
- ▶ 360° Manual Rotation; rotating upon sealed bearings
- ▶ Positive Rotation Lock: secures the boom at 12 fixed points
- ▶ 12V-DC Powered, up/down, with Dual Internal Braking
- ▶ 25' x 7/32" Galvanized Aircraft Cable and Safety Hook
- ▶ 10' Detachable Remote Pendant Control
- ▶ Crane is pre-wired, factory tested
- ▶ Detailed installation and operating instructions provided
- ▶ Durable Powder Coat Finish (Light Grey)
- ▶ Crane weight is 218 lbs (Shipping wt: 235 lbs)
- ▶ 1-Year Limited Warranty (excluding lifting cable)

NOTE: Custom configurations of this and all models of Western Mule Cranes are available. This crane can be tailored to your specific application. Variation includes, but is not limited to specifying a maximum stored height, custom boom length, additional lifting height, or a custom mounting base. Please inquire for more details.

P7-VAN: 700 Lbs. Maximum
P10-VAN: 1,000 Lbs. Maximum



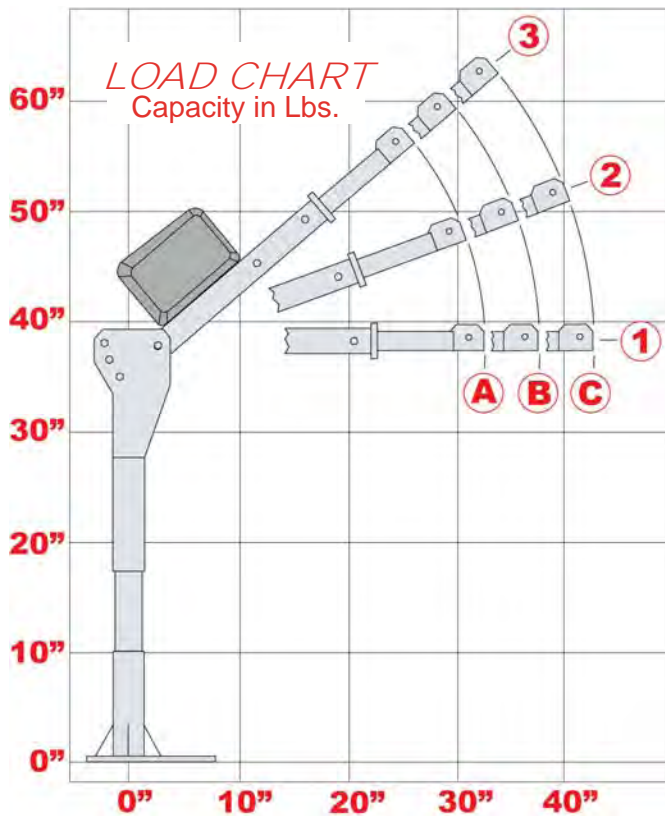
Shown with option #WP-090
+9" Taller Mast Height



COMPACT FOLD-DOWN BOOM



- ▶ Model: P7-VAN = 700 Lbs. Maximum Lifting Capacity
- ▶ Model: P10-VAN = 1,000 Lbs. Maximum Lifting Capacity
- ▶ Three Boom Elevation Angles: 0°, 20°, 40° raised manually
- ▶ Three Position Telescoping Boom: Extended Manually
- ▶ 360° Manual Rotation on a Sealed Thrust Bearing
- ▶ Rotation Hand Brake
- ▶ 12V-DC Standard, 80-Amp Maximum
- ▶ Detachable Power Cable
- ▶ 10' Remote Pendant Control, Detachable
- ▶ 20' x 3/16" Lifting Cable & Safety Hook
- ▶ Circuit Breaker Protected
- ▶ Durable Powder Coat Finish (Gloss White)
- ▶ 1-Year Warranty (excluding lifting cable)

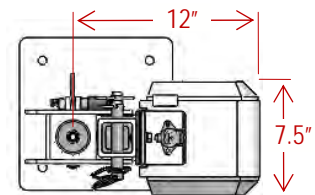
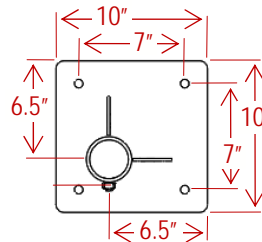


P7-VAN LOAD CHART (Lbs.)

Boom	A	B	C
3	700	685	675
2	700	675	650
1	700	665	625

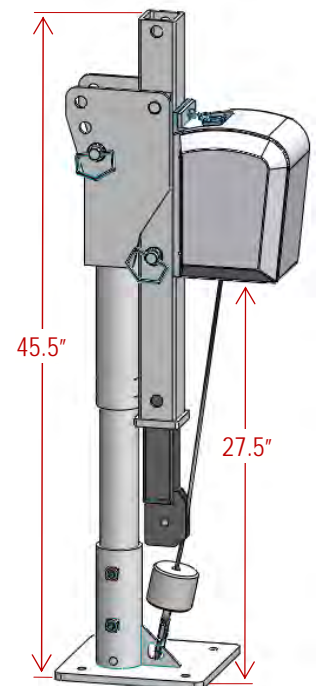
P10-VAN LOAD CHART (Lbs.)

Boom	A	B	C
3	1000	900	800
2	1000	885	775
1	1000	875	750



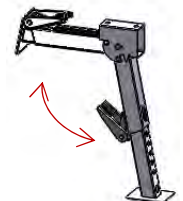
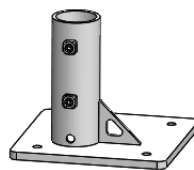
STANDARD FEATURES

MODEL:	P7-VAN	P10-VAN
Lifting Capacity (maximum)	700 lbs.	1000 lbs.
Lifting Height Max. Std. (base to hook)	57"	57"
Storage Height Folded (from base)	43.75"	43.75"
Reach Max. (from center of rotation)	43"	43"
Rotation (continuous) with Brake	360° Manual	360° Manual
Lifting Cable	20' x 3/16"	20' x 3/16"
Line Speed (feet/min) No Load / Load	16 / 6	16 / 6
Power Requirements	12V-DC 70 amps	12V-DC 70 amps
Controls	10' Remote	10' Remote
Mounting Base	10" x 10"	10" x 10"
Mounting Bolt Hole Pattern	7" x 7"	7" x 7"
Finish	White Powder-Coat	White Powder-Coat
Weight of Crane/Shipping Weight (Lbs)	118 / 160	118 / 160
Warranty (excluding lifting cable)	1-Year	1-Year



OPTIONS

Part #	Description
WP-090	Taller Mast +9" (upgrade)
WP-120	Taller Mast +12" (upgrade)
WA-34	Fold-Down Adjustable Outrigger
WP-110	Extra Mounting Base - (Standard)
WP-114	Extra Mounting Base - (Inverted)



WP-110 Standard

WP-114 Inverted

WA-34 Outrigger

We reserve the right under the Product Improvement Policy to change specifications without notice or reference to specification used herein.

WESTERN MULE CRANES 1510 Merced St. Fresno, CA USA

Ph: (800)288-6853, (559)266-6977 ♦ Fax: (559)266-7437 ♦ www.westernmule.com

